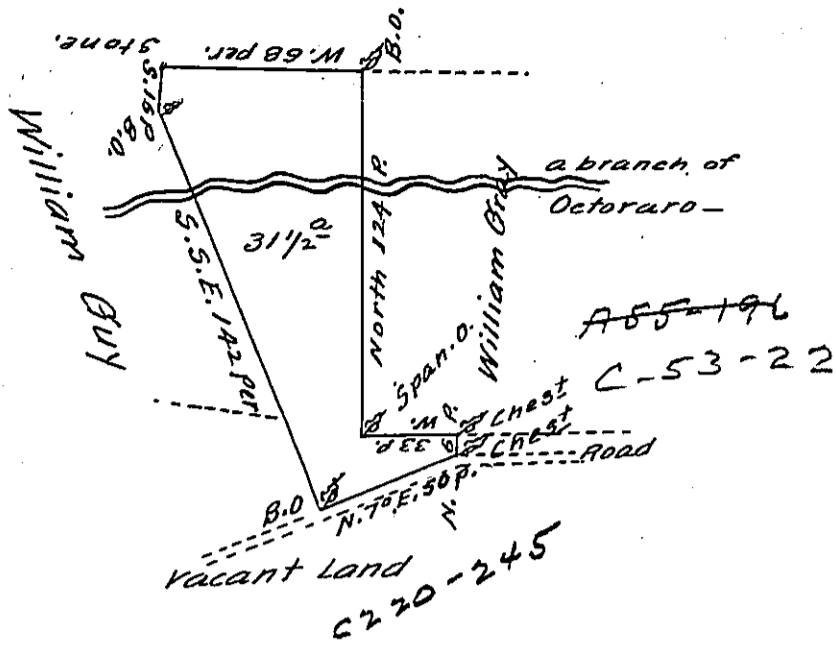


C, 84-201

A Tract laid out for the Proprietors Use.

A 76-299



By Virtue of a warrant from the Proprietor Dated the 24<sup>th</sup> Day of June 1738 The above Described Tract of Land was Surveyed unto Thomas - Little in Sadsbury in Lancaster County Beginning at a Black Oak by a Publick Road, Thence along the same North 70 Degrees East 50 perches to a Chestnut tree, Thence North 6 perches to a Chesnut, Thence West on a Line of William - Gray 33 perches to a Spanish Oak, Thence North by the said Gray 124 perches to a Black Oak, Thence West by the Proprietor's Land 68 perches to a - stone, Thence South by William Guy 16 perches to a Black Oak, Thence South South East by the said Guy and Vacant Land 142 perches to ye place of Be- gining Containing thirty one acres & a half beside the allowance of Six P. Cent. 8<sup>th</sup> of ye 6<sup>th</sup> mo 1739.

P. Sam. Lightfoot -

These may Certifie whom it shall Concern, That in the Year 1739 I Sur- v'd a Small Tract of Land In Sadsbury To<sup>s</sup> Lan<sup>s</sup> Co. Containing 31 1/2<sup>ac</sup>. Pursuant to a Warrant, Obtained by Tho<sup>s</sup> Little, but the property of the said land was then supposed to be Vested in the Bearer Thomas Hard and he as owner of the same paid me for the Survey.

Certified Novem<sup>r</sup> 6, 1766

P. Sam. Lightfoot. -

IN TESTIMONY that the above is a copy of the original remaining on file in the Department of Internal Affairs of Pennsylvania, made conformably to an Act of Assembly approved the 16th day of February, 1833, I have hereunto set my Hand and caused the Seal of said Department to be affixed at Harrisburg, this twenty-third day of August 1905

*Loac P. Brown*  
Secretary of Internal Affairs.